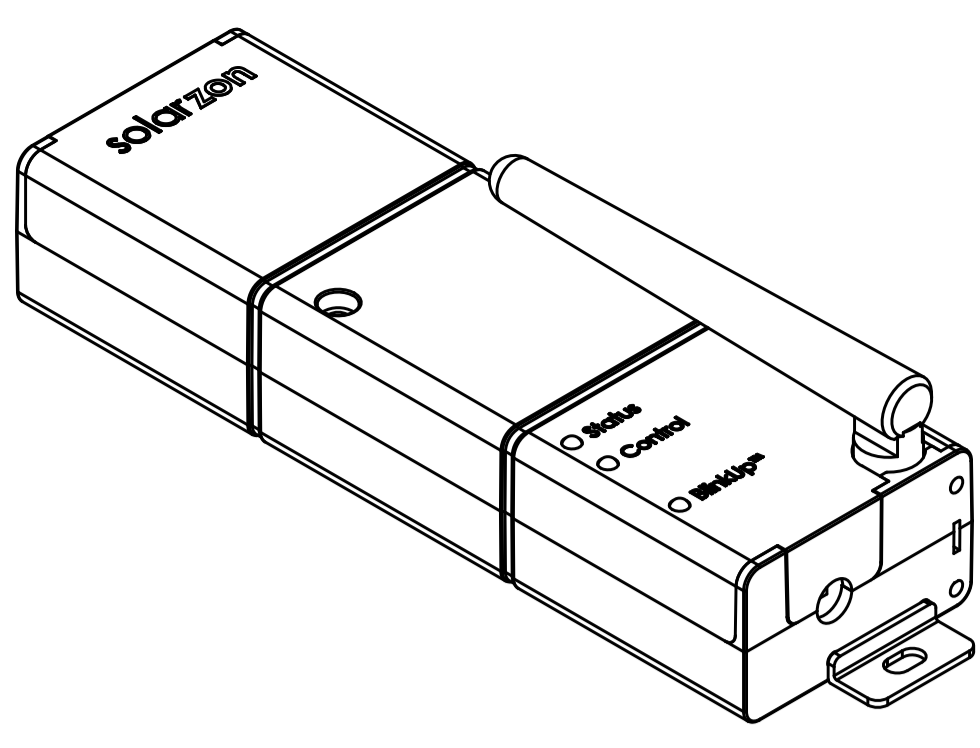


EN



solarzon® SZ-100A

Installation Instructions

www.solarzon.com

Thank you for your purchase.

solarzon® is an electric motor controller that connects to a Wi-Fi network. You can control curtains, blinds, and more with smartphone apps. This product requires a wireless network connection and may not be used properly depending on the communication environment. It is recommended that an external switch be installed together. If you need help during the installation process, please contact us by email. You can also get online support.

support@solarzon.com

Safety and Responsibility

Please read this manual carefully before installing or using the product. The solarzon® must be installed by someone with professional electric motors and power technology. The installer must check the standards and laws of the country in which this product will be installed, and inform the user of the usage and maintenance contents related to the product. No liability is assumed by solarzon® for any use not expressly stated in this manual. Be sure to turn off the power and proceed with installation, installation, and transfer of the product.

safety notices

This product should be installed indoors and should be protected against waterproofing when installed outside. There is no liability for compensation in case of trouble if installed without waterproof measures. The voltage of the motor connected to this product should be the same as the input voltage. There is no liability for any failure to comply with this requirement.

Specifications

Power supply: 100 ~ 240V, 50 / 60Hz (The power of input power and motor should be same)

Operating temperature: -10 ° C to 50 ° C

Location: Indoor installation

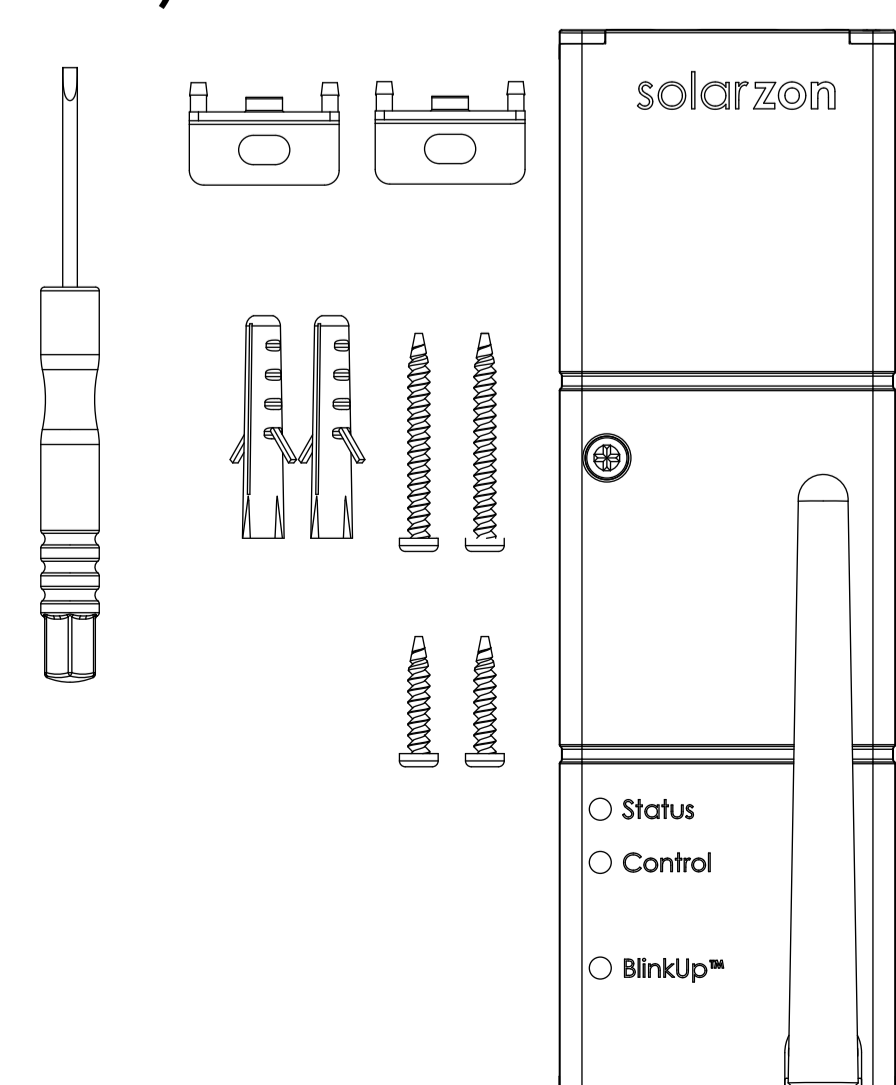
Product size: 147mm x 46mm x 27mm (Without antenna and mount attachment)

Applicable motor: MAX 1A

Fuse: 8A, 218008 (Little Fuse)

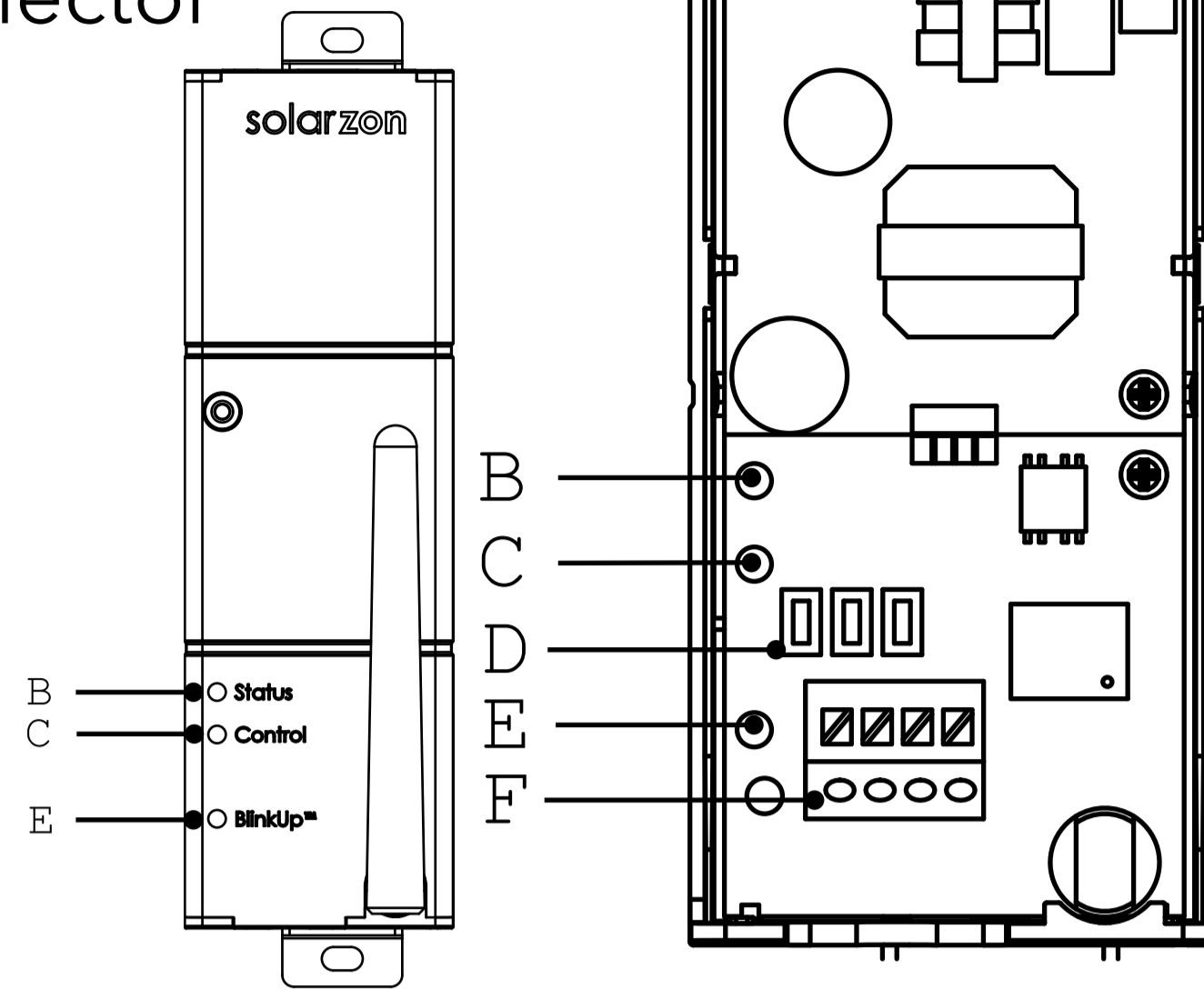
Component

- Body: 1EA
- Brackets: 2EA
- Screws(30mm): 2EA
- Screws(15m): 2EA
- Plastic joints: 2EA
- Driver(-): 1EA



Part name

- A - Power / motor connection terminal
- B - Status LED
- C - Control LED
- D - Built-in button
- E - BlinkUp™
- F - Switch connector



Installation

[Caution] Since the AC power is connected directly, always turn off the power and proceed with the installation.

1. Installation location

Because this product sets the wireless network with light, it should be in a place where it does not come in direct sunlight, bright light.



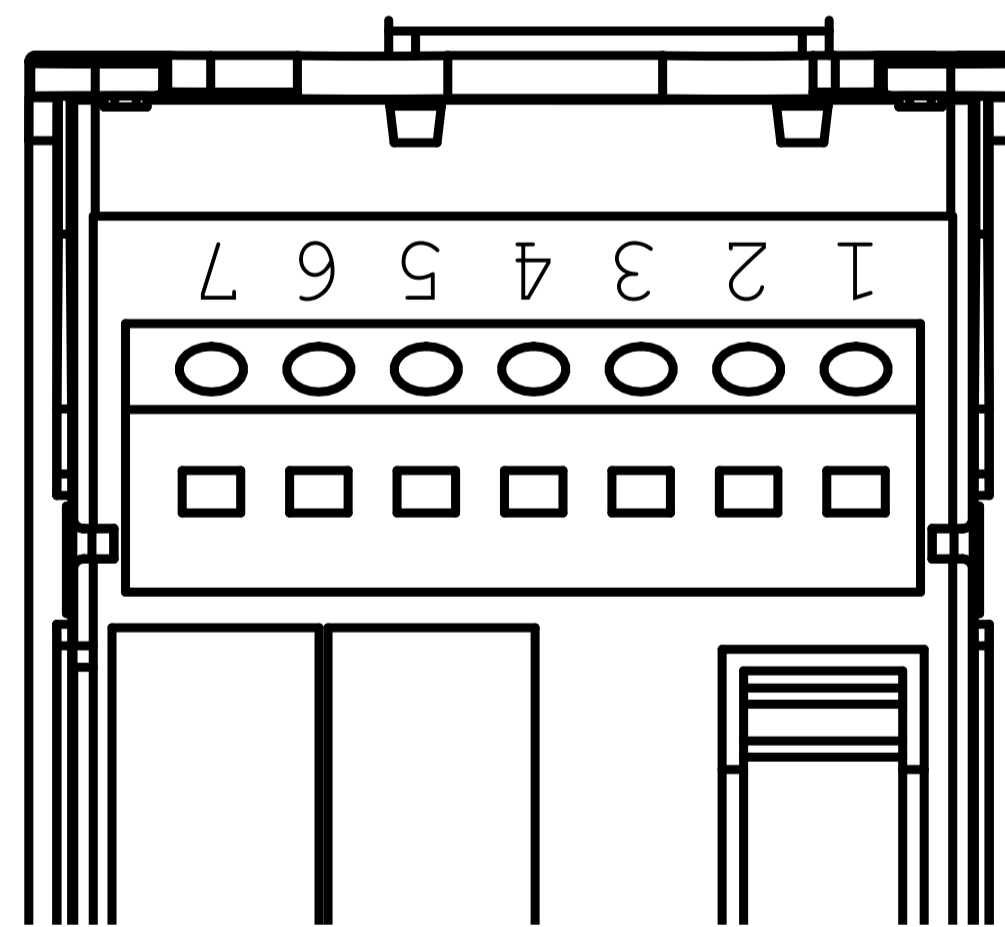
Direct sunlight (x), under bright light (x)

2. Fix product

Insert two mounting brackets into the side holes of the product. Secure it to the wall using a screw.

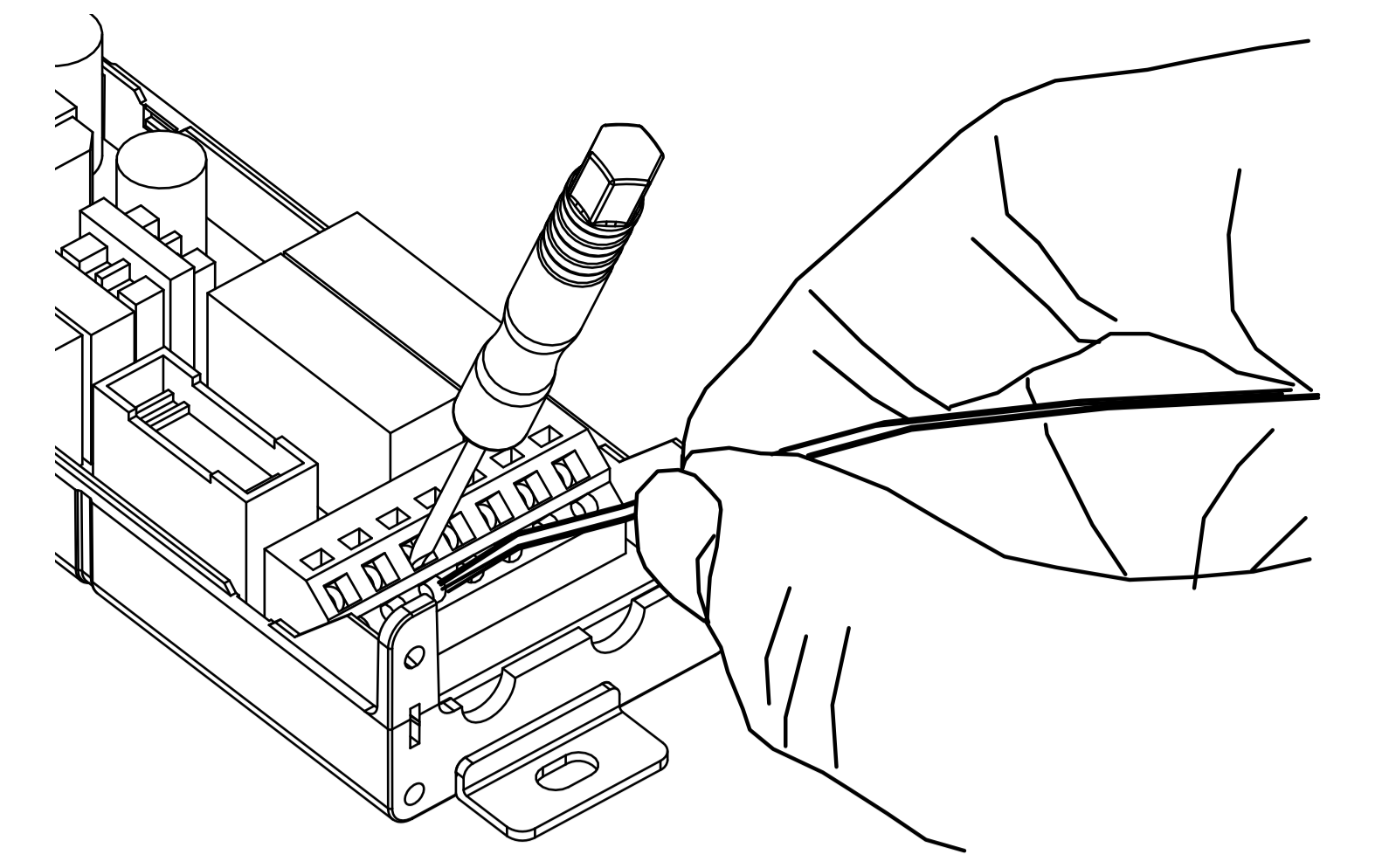
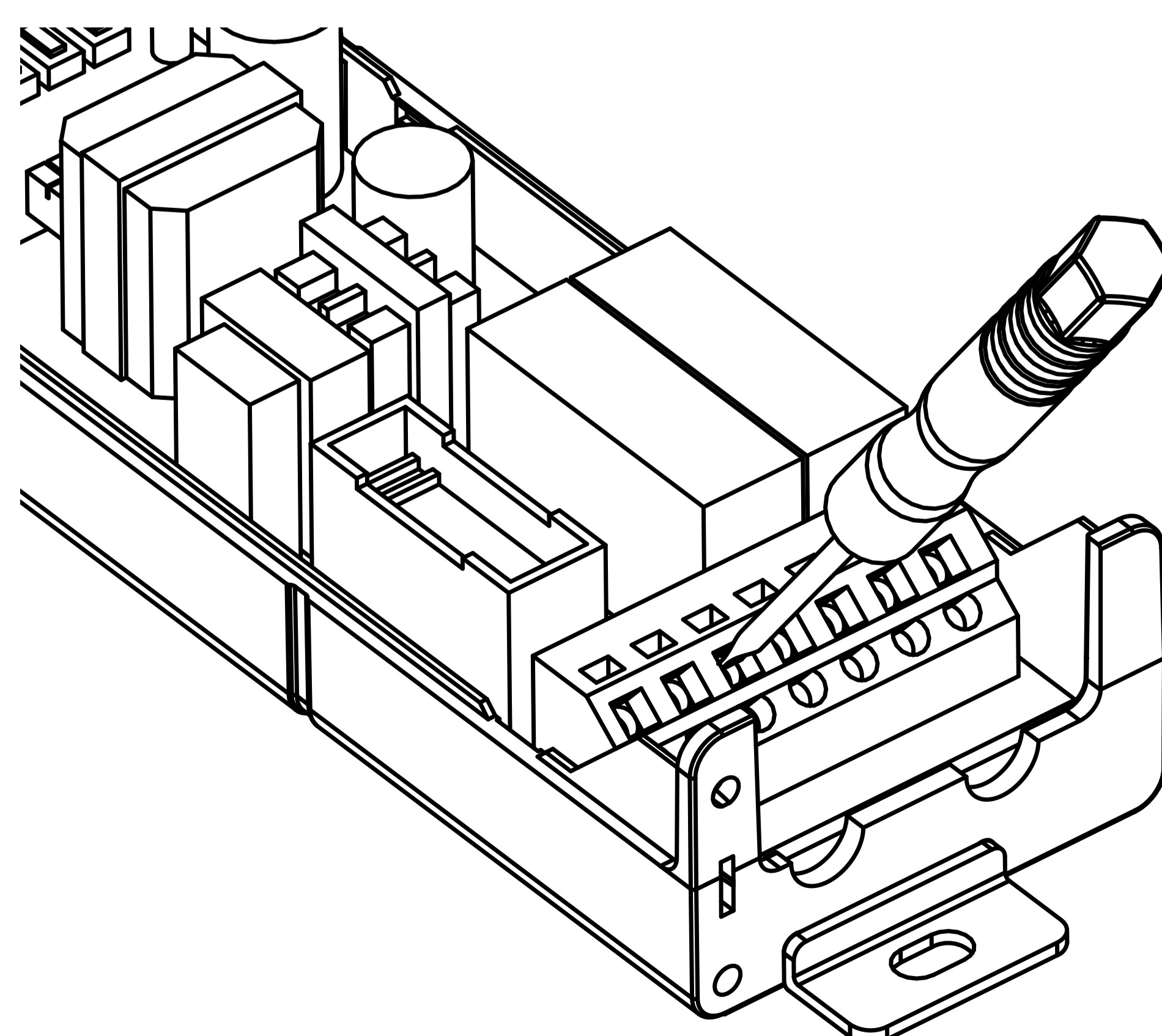
3. Power and motor wiring

Press the top and bottom of the product case to open the cover. Refer to pin map and connect power and motor wiring. Connect the grounds 3 and 4 only when necessary, depending on the motor and power source.



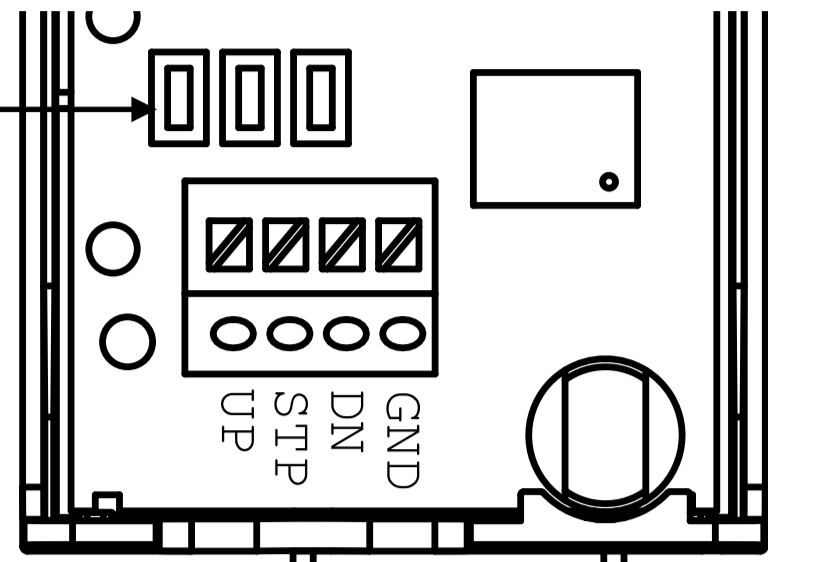
7	6	5	4	3	2	1
DOWN	UP	COM	GND	GND	N	L
Motor				Power		

Refer to the figure and press the hole to be connected and insert the pin.



Test Buttons

After finishing the wiring, test the operation of the motor using the test button.

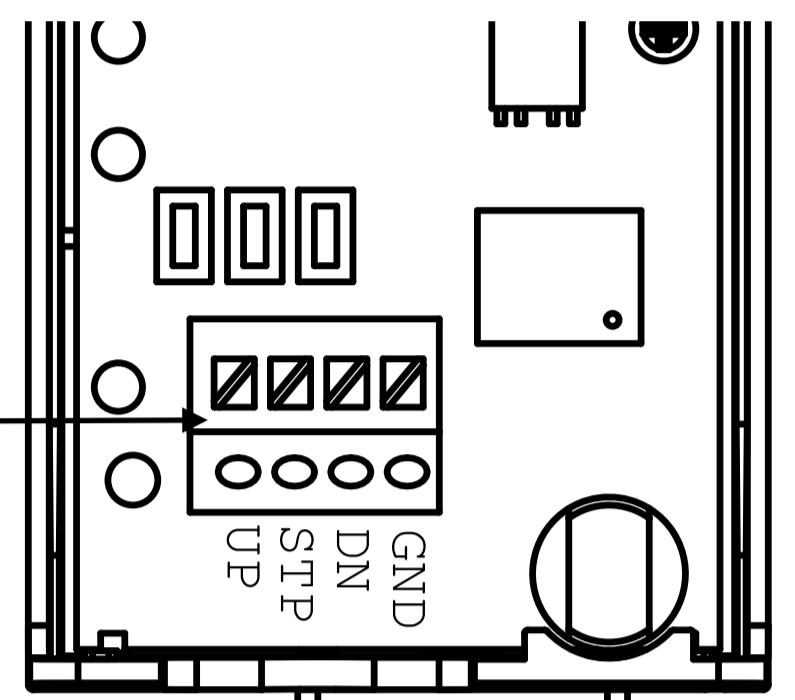


When you finish testing, cover the case and tighten the screws

4. Connection of non-voltage contact switch (optional)

Refer to the PIN map to connect the switch.

Switch connector



5. Operation

Please connect the power. Check that the LED lamp flashes red. Please check the operation of the motor by pressing the internal operation button

Wi-Fi network setup

1. App downloading

Download the solarzon® app from the Apple App Store or Google Play.

2. Execution

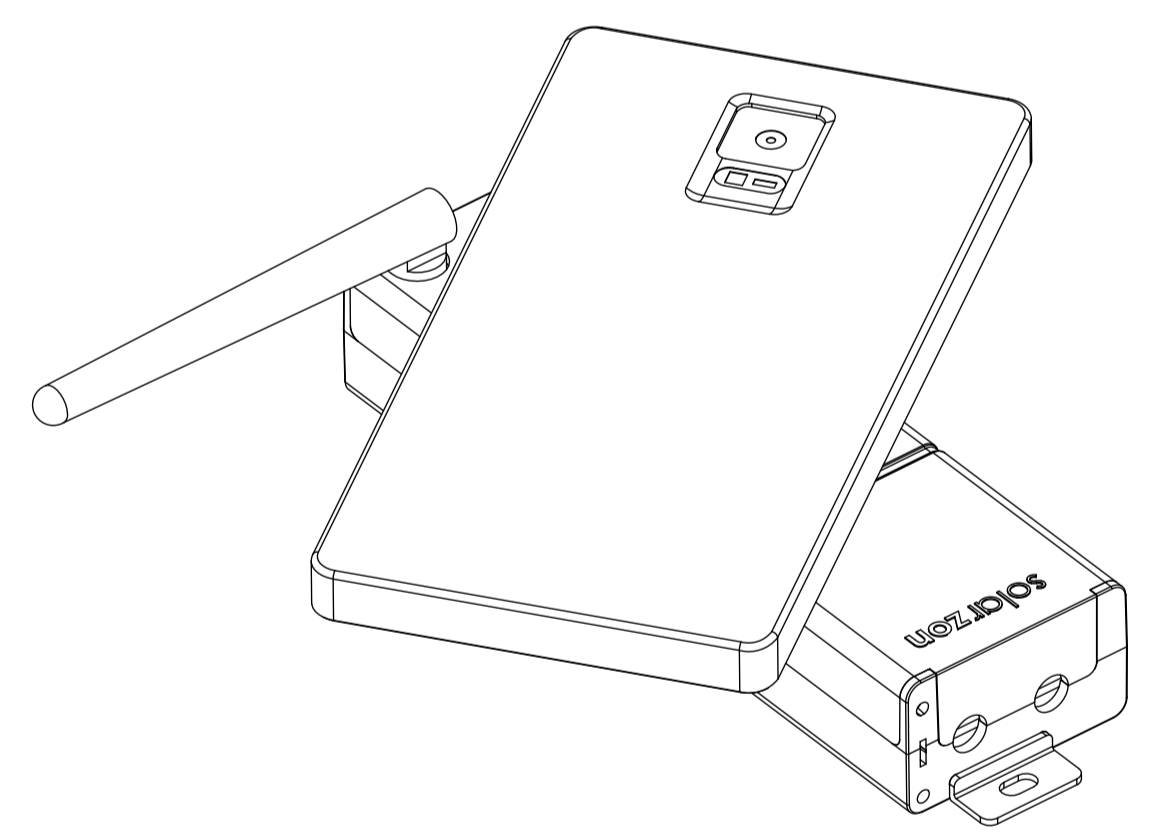
After launching the app, start by choosing how to log in.

3. Add device

Tap the + icon at the top of the app's Devices tab and follow the instructions to add your device.

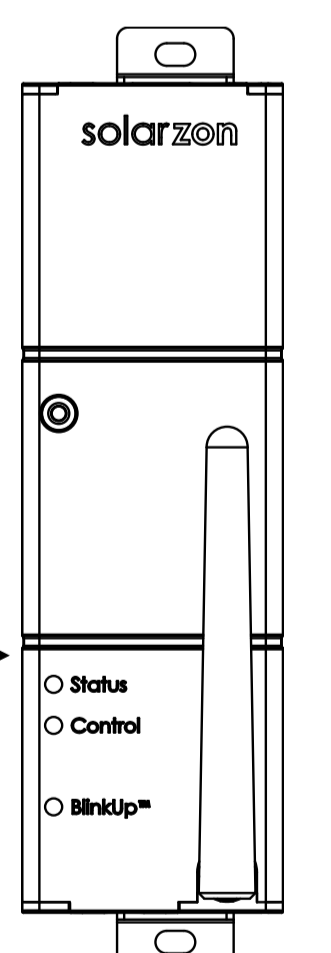
In the network setup step, select the closest network that can be connected and insert the correct password. solarzon® supports only 2.4GHz B / G / N Wi-Fi networks.

In the BlinkUp™ step, position the BlinkUp™ LED as far as possible towards the center of the smartphone screen, as shown below.



If the Wi-Fi network is properly connected and connected to the Internet, the Status LED lamp will flash green.

Green LED flashing



4. Verify operation

In the app's Devices tab, click to select the newly added device.

Press the button on the controller to check that the lamp of the control LED of the product changes.

Congratulations

The installation of the solarzon® is complete. If you have any questions during installation and use, please feel free to contact us by email or online.